

**ArtServe**  
Christian Creativity



**THE WORD AROUND US**

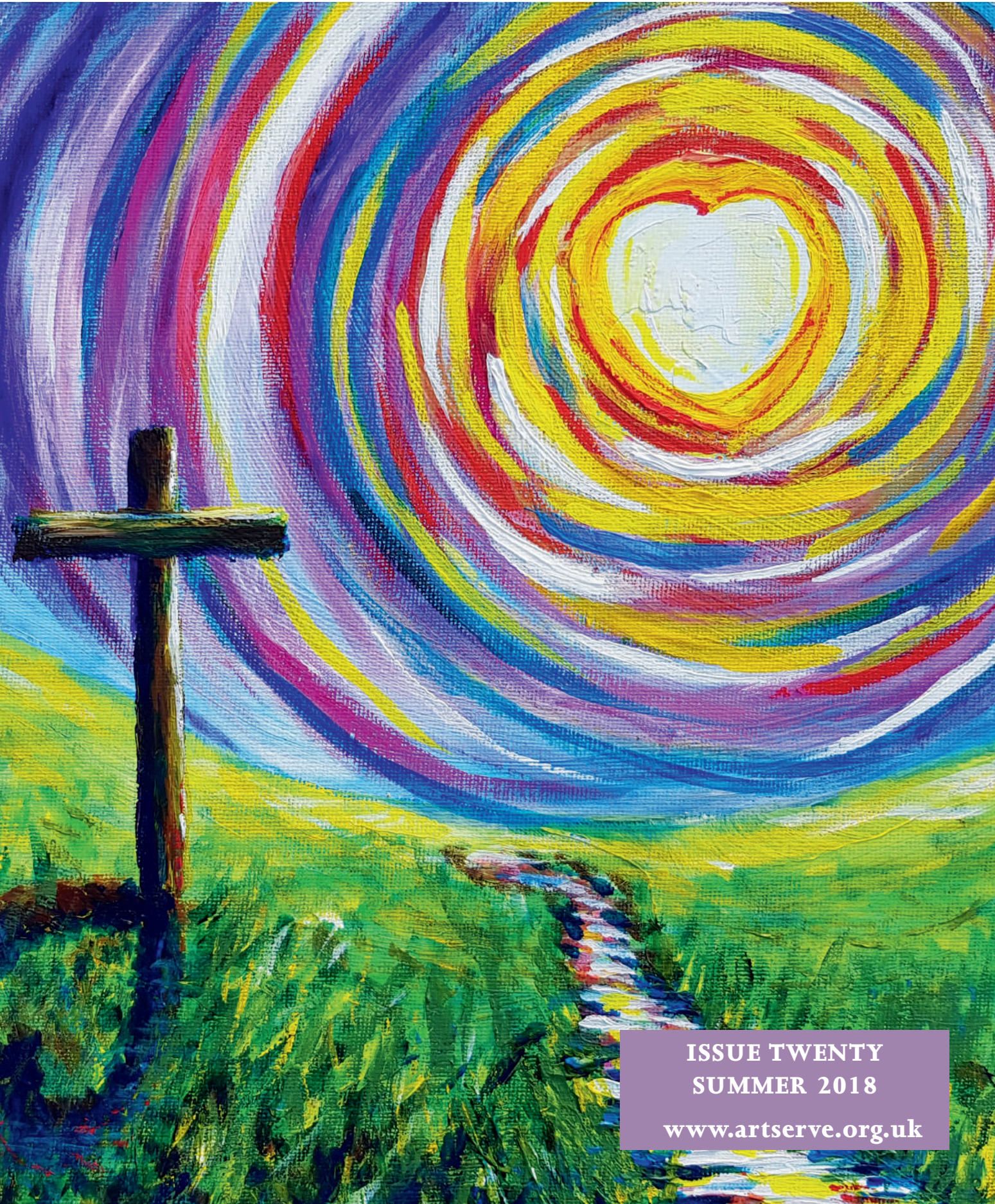
LOOKING FORWARD TO OUR FESTIVAL WEEKEND

**CREATIVE SPIRIT**

THE PRIMAL IMPERATIVE OF THE IMAGINATION

**THE LOST IS FOUND!**

HOSPITALITY, WELCOME, AND THE GOOD NEWS OF JESUS



ISSUE TWENTY  
SUMMER 2018

[www.artserve.org.uk](http://www.artserve.org.uk)

Love, as I have loved you  
(based on John 13.34)  
Acrylic on canvas board  
by ArtServe member David Puls



# Contents

<b>Editorial</b> .....	1
Jude Simms	
<b>News</b> .....	2
<b>Laughter, generosity, honesty and courage</b> .....	3
Sarah Middleton pays tribute to ArtServe member Nicola Sheldon	
<b>ArtServe Awards and Certificates</b> .....	4
Allison Lewis celebrates creativity in our churches	
<b>Freely Given?</b> .....	6
Jude Simms reflects on the implications of one woman's encounter with Jesus	
<b>Outdoor Worship</b> .....	7
Engaging with those who struggle with traditional church	
<b>Lost for Words</b> .....	8
How art and poetry enabled David Potter to share his experience of dementia	
<b>Creative Spirit</b> .....	10
Barbara Glasson explores creativity as an irresistible curiosity to explore	
<b>And at the End</b> .....	11
A new piece of music from Rob Newton	
<b>An Unexpected Life in the Arts</b> .....	12
How Andrew Taylor's earliest experiences continue to influence his work	
<b>The Lost is Found!</b> .....	14
A lost tribe of clay prodigals is made welcome in a Cumbrian village	
<b>Poems</b> .....	15
Poetry from ArtServe members Jo Kay and Derek Seymour	
<b>More than Words</b> .....	16
The ideas and inspiration behind the work of artist Hannah Dunnett	
<b>Reviews</b> .....	18
A painful journey, a mother's story, and a reflective resource	
<b>Monthly Prayer Focus</b> .....	20
Supporting and encouraging each other in prayer	
<b>Who's Who at ArtServe?</b> .....	21



© ArtServe 2018

**Editor:**  
Jude Simms

**Typesetting and layout:**  
Mach 3 Solutions Ltd  
www.mach3solutions.co.uk

**Printed and distributed by**  
Moorleys Print & Publishing Ltd,  
23 Park Rd, Ilkeston DE7 5DA

## Editorial policy

**ArtServe** aims to inform, inspire and encourage members, and to provide a forum for the sharing of ideas. The Editor welcomes contributions for future issues.

Views expressed within these pages do not necessarily represent the views of ArtServe or its Directors.

Please contact ArtServe if you want to republish text or photos as copyright belongs to the original author/photographer.

## ArtServe on the web

www.artserve.org.uk  
Facebook.com/artserve.org.uk  
Twitter: @\_ArtServe

**ArtServe** is the operating name of Christian Creativity Limited, a company limited by guarantee in England and Wales (no. 06673242) and a registered charity (no.1129831).

**Registered office**  
Trebo, Delaware Road, Gunnislake,  
Cornwall PL18 9AR  
Tel: 08456 210410  
email: info@artserve.org.uk